

LSBio™ Rabbit PLAT / TPA Enzyme Capture ELISA Kit

Catalog No. LS-F10475

User Manual

**Please Read the Manual Carefully
Before Starting your Experiment**



For research use only. Not approved for use in humans or for clinical diagnosis.

Rabbit tPA Activity ELISA Kit

Catalog # LS-F10475
format. Reagents for up to 96 tests.

Strip well

Rev: Feb 2014

INTENDED USE

This rabbit tPA activity assay is intended for the quantitative determination of active tissue plasminogen activator in rabbit plasma and other biological fluids. **For research use only.**

BACKGROUND

Tissue plasminogen activator (tPA) is a serine protease that converts plasminogen to the active serine protease plasmin in the blood fibrinolytic system [1,2]. It also plays an important role in the removal of incipient thrombi [3]. tPA is widely used for the thrombolytic treatment of acute myocardial infarction [3].

ASSAY PRINCIPLE

Functionally active rabbit tPA will form a covalent complex with the biotinylated human PAI-1 which is bound to the avidin on the plate. Only free active tPA will react with the PAI-1 bound to the plate. After appropriate washing steps, polyclonal anti-tPA primary antibody binds to the captured tPA. Excess antibody is washed away and bound primary antibody is then reacted with the secondary antibody conjugated to horseradish peroxidase. Following an additional washing step, TMB substrate is used for color development at 450nm. The amount of color development is directly proportional to the concentration of active tPA in the sample.

REAGENTS PROVIDED

- **96-well avidin coated microtiter strip plate** (removable wells 8x12) containing avidin, blocked and dried.
- **10X Wash buffer:** 1 bottle of 50ml
- **10X TBS buffer, pH 7.4:** 1 bottle of 5mL
- **Biotinylated human PAI-1:** 1 vial lyophilized protein
- **Rabbit tPA activity standard:** 1 vial lyophilized standard
- **Anti-tPA primary antibody:** 1 vial lyophilized polyclonal antibody
- **Anti-sheep horseradish peroxidase secondary antibody:** 1 vial concentrated HRP labeled antibody
- **TMB substrate solution:** 1 bottle of 10ml solution

STORAGE AND STABILITY

Store all kit components at 4°C upon arrival. Return any unused microplate strips to the plate pouch with desiccant. Reconstituted standards and primary may be stored at -80°C for later use. Do not freeze-thaw the standard and primary antibody more than once. Store all other unused kit components at 4°C. This kit should not be used beyond the expiration date.

OTHER REAGENTS AND SUPPLIES REQUIRED

- Microtiter plate shaker capable of 300 rpm uniform horizontally circular movement
- Manifold dispenser/aspirator or automated microplate washer
- Microplate reader capable of measuring absorbance at 450 nm
- Pipettes and Pipette tips
- Deionized or distilled water
- Polypropylene tubes for dilution of standard
- Paper towels or laboratory wipes
- 1N H₂SO₄ or 1N HCl
- Bovine Serum Albumin Fraction V (BSA)
- Tris(hydroxymethyl)aminomethane (Tris)
- Sodium Chloride (NaCl)

PRECAUTIONS

- **FOR LABORATORY RESEARCH USE ONLY. NOT FOR DIAGNOSTIC USE.**
 - Do not mix any reagents or components of this kit with any reagents or components of any other kit. This kit is designed to work properly as provided.
- Always pour peroxidase substrate out of the bottle into a clean test tube. Do not pipette out of the bottle as contamination could result.
- Keep plate covered except when adding reagents, washing, or reading.
- DO NOT pipette reagents by mouth and avoid contact of reagents and specimens with skin.
- DO NOT smoke, drink, or eat in areas where specimens or reagents are being handled.

PREPARATION OF REAGENTS

- TBS buffer:** 0.1M Tris, 0.15M NaCl, pH 7.4
- Blocking buffer (BB):** 3% BSA (w/v) in TBS
- 1X Wash buffer:** Dilute 50ml of 10X wash buffer concentrate with 450ml of deionized water

SAMPLE COLLECTION

Collect plasma using EDTA or citrate as an anticoagulant. Heparinized plasma is not recommended. Centrifuge for 15 minutes at 1000xg within 30 minutes of collection. It is important to ensure a platelet free preparation as platelets can release PAI-1, which in turn could potentially form a complex with tPA. Assay immediately or aliquot and store at $\leq -20^{\circ}\text{C}$. Avoid repeated freeze-thaw cycles. Serum and cell culture media at neutral pH may also be used.

ASSAY PROCEDURE

Perform assay at room temperature. Vigorously shake plate (300rpm) at each step of the assay.

Biotinylated Human PAI-1 Addition

Add 10ml blocking buffer directly to the biotinylated human PAI-1 vial and agitate gently to completely dissolve contents. Remove microtiter plate from bag and add 100 μl to all wells. Shake plate at 300rpm for 30 minutes. Wash wells three times with 300 μl wash buffer. Remove excess wash by gently tapping plate on paper towel or kimwipe.

Preparation of Standard

Reconstitute standard by adding 8ml of blocking buffer directly to the vial and agitate gently to completely dissolve contents. This will result in a 100ng/ml standard solution.

Dilution table for preparation of rabbit tPA standard:

tPA concentration (ng/ml)	Dilutions
100	100 μl straight from vial
50	500 μl (BB) + 500 μl (100ng/ml)
20	600 μl (BB) + 400 μl (50ng/ml)
10	500 μl (BB) + 500 μl (20ng/ml)
5	500 μl (BB) + 500 μl (10ng/ml)
2	600 μl (BB) + 400 μl (5ng/ml)
1	500 μl (BB) + 500 μl (2ng/ml)
0.5	500 μl (BB) + 500 μl (1ng/ml)
0	500 μl (BB) Zero point to determine background

NOTE: DILUTIONS FOR THE STANDARD CURVE AND ZERO STANDARD MUST BE MADE AND APPLIED TO THE PLATE IMMEDIATELY.

Standard and Unknown Addition

If using acidified citrate samples with a pH lower than 6.0, add 30 μl of 10X TBS buffer to each well and construct the standard curve in the same format. If using samples at a neutral pH, this step can be omitted. Add 100 μl tPA standards (in duplicate) and unknowns to wells. Carefully record position of standards and unknowns. Shake plate at 300rpm for 30 minutes. Wash wells three times with 300 μl wash buffer. Remove excess wash by gently tapping plate on paper towel or kimwipe.

NOTE: The assay measures active tPA in the 0.5-100 ng/ml range. If the unknown is thought to have high tPA levels, dilutions may be made in blocking buffer.

Primary Antibody Addition

Reconstitute primary antibody by adding 10ml of blocking buffer directly to the vial and agitate gently to completely dissolve contents. Add 100 μl to all wells. Shake plate at 300rpm for 30 minutes. Wash wells three times with 300 μl wash buffer. Remove excess wash by gently tapping plate on paper towel or kimwipe.

Secondary Antibody Addition

Dilute 2 μl of conjugated secondary antibody in 10ml of blocking buffer and add 100 μl to all wells. Shake plate at 300rpm for 30 minutes. Wash wells three times with 300 μl wash buffer. Remove excess wash by gently tapping plate on paper towel or kimwipe.

Substrate Incubation

Add 100µl TMB substrate to all wells and shake plate for 2-10 minutes. Substrate will change from colorless to different strengths of blue. Quench reaction by adding 50µl of 1N H₂SO₄ or HCl stop solution to all wells when samples are visually in the same range as the standards. Add stop solution to wells in the same order as substrate upon which color will change from blue to yellow. Mix thoroughly by gently shaking the plate.

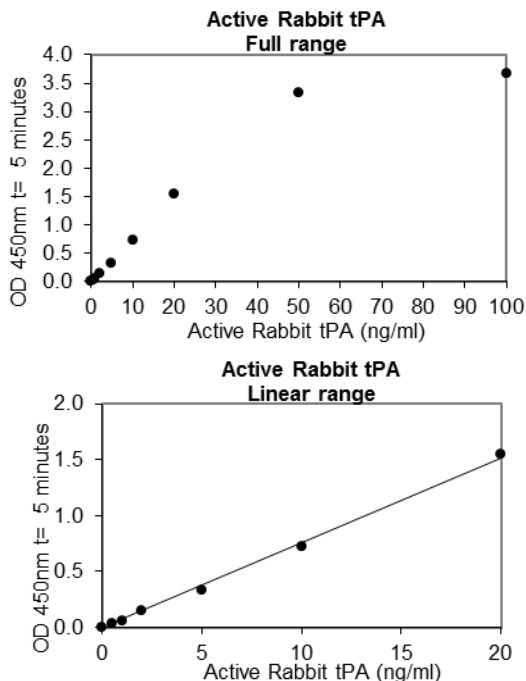
Measurement

Set the absorbance at 450nm in a microtiter plate spectrophotometer. Measure the absorbance in all wells at 450nm. Subtract zero point from all standards and unknowns to determine corrected absorbance (A_{450}).

Calculation of Results

Plot A_{450} against the amount of tPA in the standards. Fit a straight line through the linear points of the standard curve using a linear fit procedure if unknowns appear on the linear portion of the standard curve. Alternatively, create a standard curve by analyzing the data using a software program capable of generating a four parameter logistic (4PL) curve fit. The amount of tPA in the unknowns can be determined from this curve. If samples have been diluted, the calculated concentration must be multiplied by the dilution factor.

A typical standard curve (EXAMPLE ONLY):



EXPECTED VALUES

No specific data has been reported for rabbit tPA concentrations. In house testing of pooled normal rabbit plasma in citrate with the addition of 10X TBS buffer indicates a tPA concentration of 5 ng/ml.

Abnormalities in tPA levels have been reported in the following conditions:

- Ischemic Diseases: tPA may affect the course of ischemic diseases [4].
- Pathological Infarction: tPA may prevent or limit pathological infarction and improve neurological functions [5]. Usage of tPA at the onset of ischemic stroke improves clinical outcome [6].
- Blood-Brain Barrier: tPA is necessary and sufficient to directly increase the vascular permeability in the early stages of BBB opening [7].
- Venous Thrombosis: Locally applied tPA reduces thrombus formation after vascular injury [8].

PERFORMANCE CHARACTERISTICS

Sensitivity: The minimum detectable dose (MDD) was determined by adding two standard deviations to the mean optical density value of twenty zero standard replicates (range OD₄₅₀: 0.138-0.163) and calculating the corresponding concentration. The MDD was 0.181ng/ml.

Intra-assay Precision: These studies are currently in progress. Please contact us for more information.

Inter-assay Precision: These studies are currently in progress. Please contact us for more information.

Recovery: These studies are currently in progress. Please contact us for more information.

Linearity: These studies are currently in progress. Please contact us for more information.

Specificity: This assay recognizes rabbit tPA. Pooled normal plasma from human, rat, and pig was assayed and no significant cross-reactivity was observed. Pooled normal plasma from sheep resulted in significant color development.

DISCLAIMER

This information is believed to be correct but does not claim to be all-inclusive and shall be used only as a guide. The supplier of this kit shall not be held liable for any damage resulting from handling of or contact with the above product.

REFERENCES

1. Quax PH, *et al.*: J Biol Chem. 1990, 265(26):15560-15563.
2. Kristensen P, *et al.*: J Cell Biol. 1985, 101(1):305-311.
3. Camani C, *et al.*: J Biol Chem. 1994, 269(8):5770-5775.
4. Nassar T, *et al.*: Blood. 2003, 103(3):897-902.
5. Sakurama T, *et al.*: Stroke. 1994, 25:451-456.
6. The National Institute of Neurological Disorders and Stroke rt-PA Stroke Study Group. Tissue Plasminogen Activator for Acute Ischemic Stroke. N Engl J Med. 1995, 333(24):1581-1588.
7. Yepes M, *et al.*: J Clin Invest. 2003,112(10):1483-1485.
8. Underwood MJ, *et al.*: Cardiovasc Res. 1993, 27(12):2270-2273.

Example of ELISA Plate Layout

96 Well Plate: 18 Standard wells, 78 Sample wells

	1	2	3	4	5	6	7	8	9	10	11	12
A	0	0.5 ng/ml	1 ng/ml	2 ng/ml	5 ng/ml	10 ng/ml	20 ng/ml	50 ng/ml	100 ng/ml			
B	0	0.5 ng/ml	1 ng/ml	2 ng/ml	5 ng/ml	10 ng/ml	20 ng/ml	50 ng/ml	100 ng/ml			
C												
D												
E												
F												
G												
H												

Important Note: During shipment, small volumes of product will occasionally become entrapped in the seal of the product vial. We recommend briefly centrifuging the vial to dislodge any liquid in the container's cap prior to opening.

Warning: This reagent may contain sodium azide and sulfuric acid. The chemical, physical, and toxicological properties of these materials have not been thoroughly investigated. Standard Laboratory Practices should be followed. Avoid skin and eye contact, inhalation, and ingestion. Sodium azide forms hydrazoic acid under acidic conditions and may react with lead or copper plumbing to form highly explosive metal azides. On disposal, flush with large volumes of water to prevent accumulation.

Returns, Refunds, Cancellations: Any problems with LifeSpan products must be reported to LifeSpan within 10 days of product receipt. The customer must obtain written authorization from LifeSpan before returning items. To request that goods be returned, please contact LifeSpan Technical Support. If an error by LifeSpan BioSciences results in shipment of an incorrect order, LifeSpan will, at its option, either ship a replacement order at no charge, or credit the customer's account for the original product shipped in error. Returns and cancellations may be subject to a 30% restocking fee.

Conditions & Warranty: All LifeSpan products are intended for Research Use Only and are not for use in human therapeutic or diagnostic applications. The information supplied with each product is believed to be accurate, but no warranty or guarantee is offered for the products, because the ultimate conditions of use are beyond LifeSpan's control. The information supplied with each product is not to be construed as a recommendation to use this product in violation of any patent, and LifeSpan will not be held responsible for any infringement or other violation that may occur with the use of its products. Under no event will LifeSpan be responsible for any loss of profit or indirect consequential damage, including, but not limited to, personal injuries resulting from use of these products. LifeSpan's liability to any user of Products for damages that do not result from any fault of the user, will be limited to replacement of the Product(s) only, and in no event shall LifeSpan's liability exceed the actual price received by LifeSpan for the Product(s) at issue. LifeSpan shall not be liable for any indirect, special, incidental or consequential damages. LIFESPAN FURTHER DISCLAIMS ANY AND ALL EXPRESS AND IMPLIED OR STATUTORY WARRANTIES WITH RESPECT TO THE PRODUCTS, INCLUDING BUT NOT LIMITED TO ANY IMPLIED WARRANTIES OF MERCHANTABILITY, FITNESS FOR A PARTICULAR PURPOSE. LifeSpan disclaims any and all responsibility for any injury or damage which may be caused by the fault of the user.

For research use only. Not approved for use in humans or for clinical diagnosis.



2401 Fourth Avenue Suite 900 Seattle, WA 98121

Tel: 206.374.1102

Fax: 206.577.4565

Technical.Support@LSBio.com